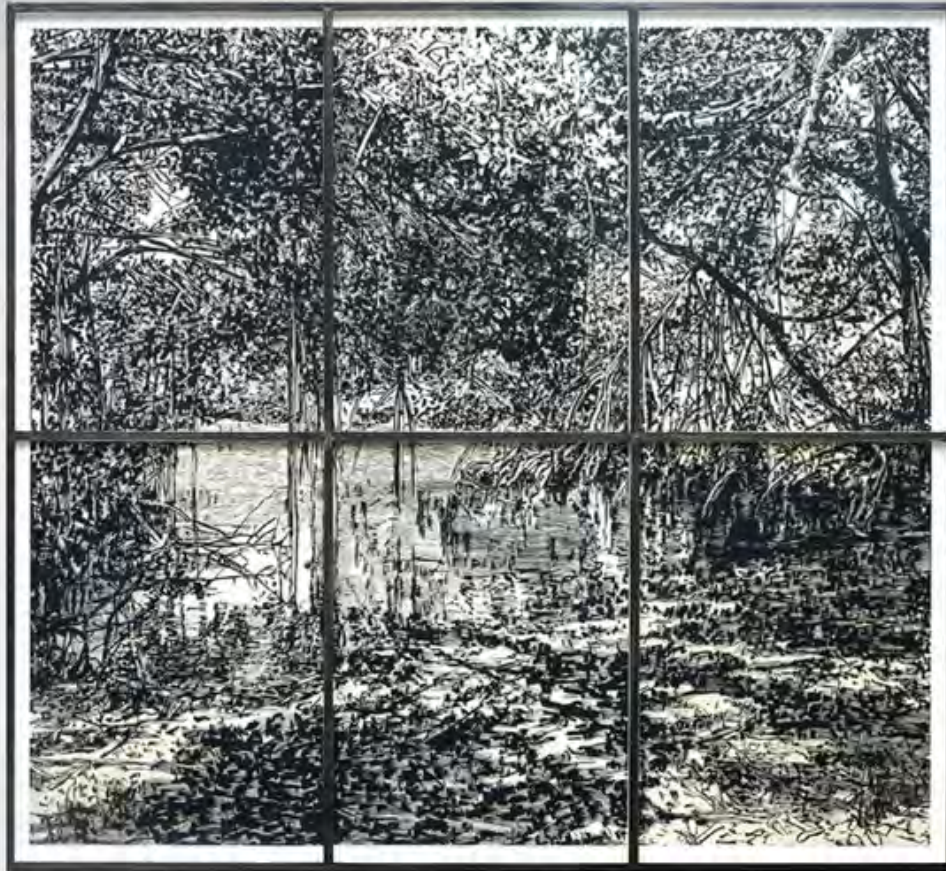


LN S GALLERY

LASTING IMPRESSIONS:
A CESSATION OF EXISTENCE



A solo exhibition by Jennifer Basile
September 16 – November 19, 2022

LnS Gallery is pleased to present "Lasting Impressions: A Cessation of Existence" by Jennifer Basile. The works featured capture moments in time of Florida's Everglades and are a fusion of the artist's innovative process and passion for the magical, fragile beauty of each unique ecosystem. A master printmaker, this is Basile's second solo exhibition at LnS Gallery featuring works created in 2021 and 2022, derived from numerous trips to Everglades National Park, Big Cypress National Preserve, and Corkscrew Swamp Sanctuary.

Each rendering is directly inspired by the numerous biomes that comprise the three national parks, along with their native flora and fauna. The imagery not only confronts the very real dangers imposed upon these threatened ecosystems, but exudes the beauty contained within the landscapes, embracing visitors by way of magnificent grand-scale prints.

"Lasting Impressions" is among Basile's most ambitious work to date, featuring a monumental relief print to immerse viewers in the swampy serenity of the Cypress Domes, supplemented by jewel-like small format mixed-media works to create illustrative terrariums that highlight the inhabitants of these majestic lands, creating her desired effect through the layering of wood, linoleum relief prints, glassine, drafting film, graphite, and acrylic.

We invite you to traverse through the terrain of "Lasting Impressions: A Cessation of Existence" by Jennifer Basile.



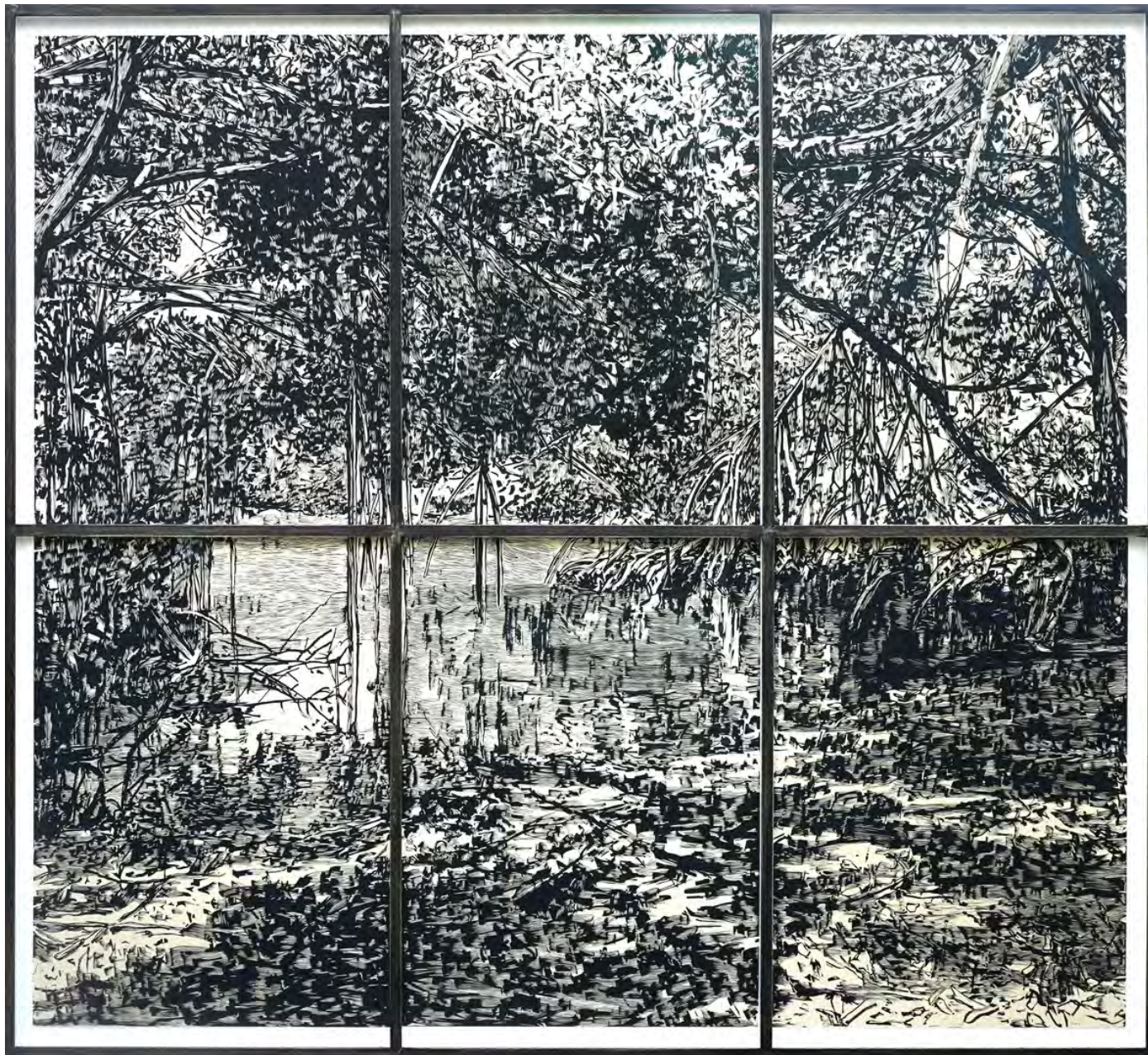
Costal Prairie Trail, 2022, relief print on Japanese rice paper, 72 x 144 inches, 182.9 x 365.8 cm



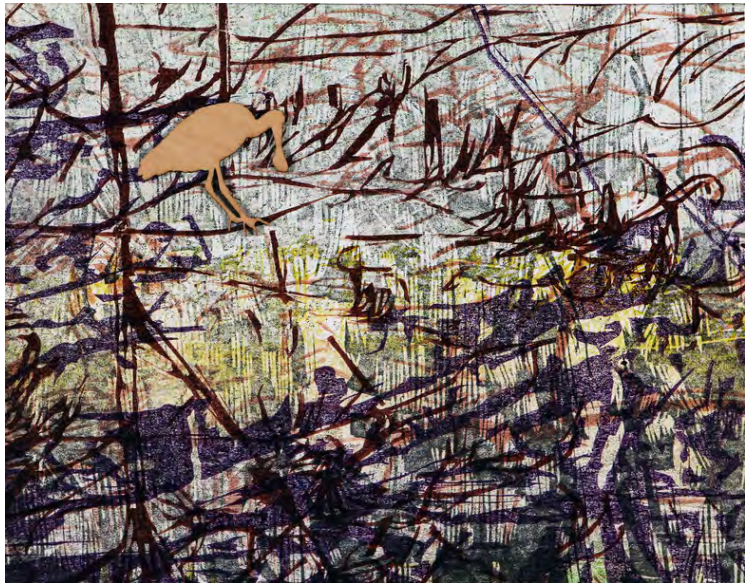
Coot Bay II, 2022, relief print on Japanese rice paper, 72 x 144 inches, 182.9 x 365.8 cm



Cypress Dome, 2022, relief print on Japanese rice paper, 120 x 324 inches, 304.8 x 823 cm



*Launch Site, Coot Bay Pond, 2021, relief print on Japanese rice paper,
103 x 116 inches, 261.6 x 294.6 cm*



Perched, 2022
relief print on glassine, wood
16 x 20 inches
40.6 x 50.8 cm



Landing II, 2022
relief print on glassine, wood
18 x 24 inches
45.7 x 61 cm



Myakka, 2021, relief print on Japanese rice paper, 44 x 44 inches, 111.8 x 111.8 cm



Echo, 2021, hand cut relief print on Japanese rice paper, 72 x 72 inches, 182.9 x 182.9 cm



Big Cypress Winter, 2021, relief print, drafting film, marker, 30 x 40 inches, 76.2 x 101.6 cm

Egret II, 2022

relief print, acrylic, and graphite

on drafting film

11 x 14 inches

27.9 x 35.6 cm



Egret, 2022

relief print, acrylic, and graphite

on drafting film

11 x 14 inches

27.9 x 35.6 cm

Egret IV, 2022, relief print, acrylic paint, and graphite, on drafting film,
18 x 24 inches, 45.7 x 61 cm

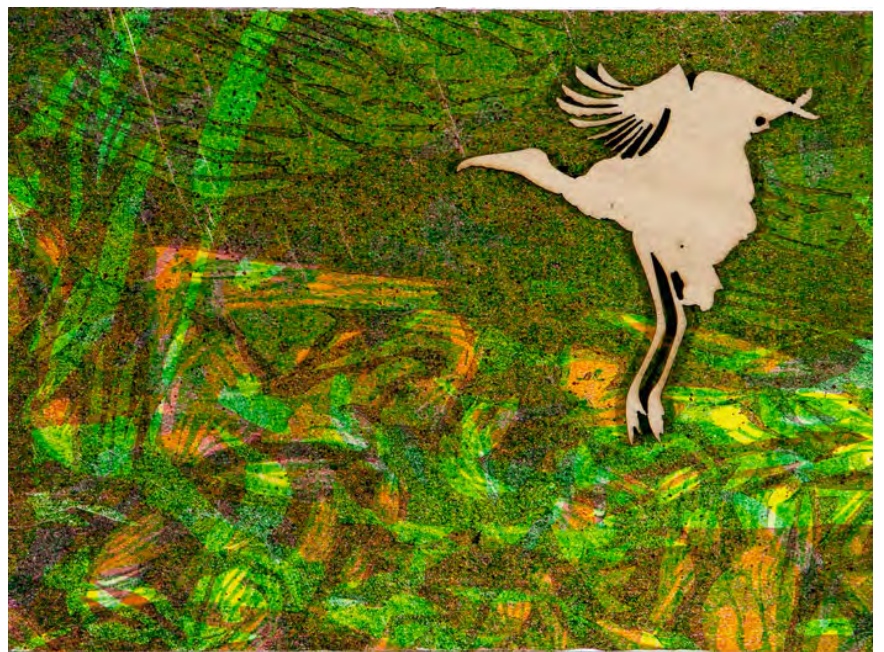




Egret III, 2022, relief print, acrylic paint, and graphite on drafting film,
16 x 20 inches, 40.6 x 50.8 cm



Flight, 2022
relief print on glassine, wood
5 x 7 inches
12.7 x 17.8 cm



Landing, 2022
relief print on glassine, wood
5 x 7 inches
12.7 x 17.8 cm

Confrontation, 2022
relief print on glassine, wood
5 x 7 inches
12.7 x 17.8 cm



Flight II, 2022
relief print on glassine, wood
5 x 7 inches
12.7 x 17.8 cm

Jennifer Basile

b. 1973 Manhasset, NY



Jennifer Basile earned her Master of Fine Arts in Painting & Printmaking at Southern Illinois University Edwardsville, and her Bachelor's of Fine Arts in Painting & Printmaking at the University of Miami. She is in her 20th year as an art educator at Miami-Dade College. Basile's love for the environment is rooted in her childhood, when she discovered its avenues of escapism and meditation. Throughout her extensive travels and perfected talent, she has combined this passion with the long sought-after tradition of landscape renderings which she adopted and transformed through her printing practice. In time, she has developed a narrative around advocacy and awareness using her art as a platform to discuss the pertinent issues to the world we live in.